

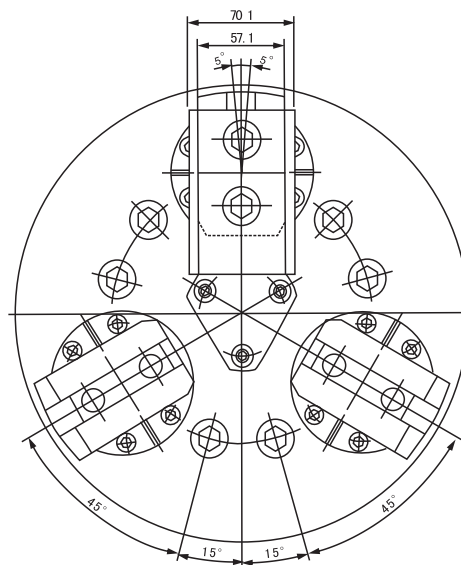
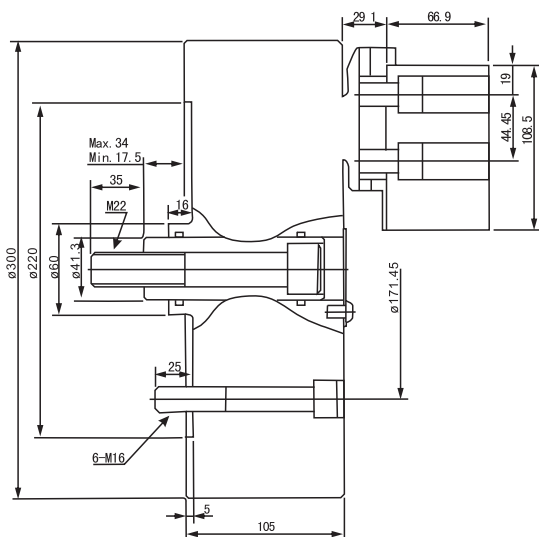
## > BL SERIES

### 三爪擺式夾頭

### 3-JAW BALL SWING LOCK CHUCK



- ◎ 1.可引入加工物并夾持.爪齒為夾持 拉近兩段動作,故可將加工物確實吸附于夾頭前面的定位器上,維持安定夾持狀態.
  - ◎ 2.可做外徑夾持與內徑夾持,經由簡單操作可靈活切換外徑夾持內徑夾持.
  - ◎ 3.可夾持推拔部品.本產品可確實夾持具有模斜度的鑄鍛制品的黑色表皮面,故加工物夾持部分可省略取捨加工的手續.(最大可夾持到20°推拔)
  - ◎ 4.爪齒可做搖晃運動.爪齒可依照部位做搖晃運動,故能穩定夾持.(單側最大可以到5°)
  - ◎ 5.具有優异的防路性.本品與既有一般夾頭不同,在結構上具有防路性.特別是在鎖定臂(lock arm) 部分設有防路套, 可防止鐵削侵入.
- ◎ The chuck can attract the workpiece and hold it on.
  - ◎ The jaw operates in two stages :Clamping pull back, so it can hold the workpiece exactly on the position in front of the chuck, and make it under the stable situation.
  - ◎ The chuck can grasp the workpiece on both O.D. and I.D. clamping.
  - ◎ The chuck can switch between O.D. and I.D. clamping mode by a simple operation.
  - ◎ The chuck can grasp the part of the taper. The chuck can exactly grasp the black surface of the cast irons, which has draft.
  - ◎ So the discard process can be ignored on the chucking part of the workpiece. (It can grasp up to a 20 degree taper when using a clipper.)
  - ◎ The jaw can equalize on the O.D. clamping, so it can grasp the workpiece steady. (Jaw self-equalizing to max 5°)
  - ◎ Dustproof performance is excellent. It is differ from regular general purpose chuck. It is structurally dustproof. Especially there is a dustproof seal in the part of lock arm to prevent the dust.



型式 Model	柱塞行程 Piston stroke (mm)	爪行程直徑 Jaw stroke dia (mm)	最大拉杆推力 Max DB pull KN(kgf)	最大静夾推力 Max. Gripping Force KN(kgf)	最大使用油壓力 Max oil pressure (kgf/cm <sup>2</sup> )	最高回轉速 Max R.P.M	重量 Weight (Kg)	慣性矩 kg·m <sup>2</sup>	適合油壓缸 Matched cylinders
BL-12	17.5	12.4	40.7(4152)	122(12440)	2.8(28.5)	2800	65	0.18	MS150C

\* 保留技術更改的權利, 恕不另行通知 Subject to technology changes without prior information  
 \* 非標需求可訂做 Non-standard requirements can be made