

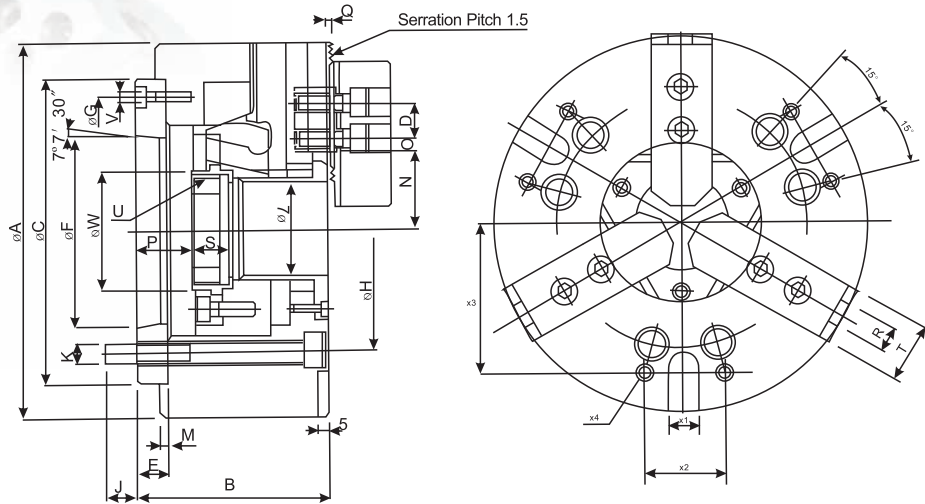
> NB-200A SERIES

三爪超大孔中空油壓夾頭
(包含連接板)



3-JAW WEDGE TYPE EXTRA LARGE THROUGH-HOLE POWER CHUCK (WITH ADAPTOR)

- ◎ 1. 超大貫通孔徑：油壓夾頭中，具最大之貫穿孔徑。
- ◎ 2. 尺寸規格提高20%：比一般夾頭，具高約20%之轉速，夾持力及貫通孔徑尺寸。
- ◎ 3. NB-200A型夾頭系依ASA B5.9 A型主軸標準而設計。
- ◎ 4. NB-200A型夾頭採用高級合金鋼材質，所有滑動面均經表面硬化及研磨處理，以提高回轉精度及耐久性。
- ◎ More large bore: The largest bore in wedge type power operated chucks.
- ◎ 20% large bore: Approximately 20% higher speed, higher gripping force and larger bore compared with regular chucks.
- ◎ Model NB-200A chucks are assembled with adaptor for ASA B5.9 type A spindles.
- ◎ Model NB-200A chucks are manufactured from high grade alloy steel.
- ◎ All sliding surfaces are hardened and ground for accurate actual running and long service repeatability.



型式 Model	通孔直徑 Through hole dia (mm)	柱塞行程 Piston stroke (mm)	爪行程(直徑) Jaw stroke dia (mm)	最大拉杆推力 Max DB pull (kgf)	最大夾持力 Max clamping force (Kgf)	最大使用油壓力 Max oil pressure (kgf/cm ²)	最高回轉速 max r.p.m	重量 Weight (kg)	慣性矩 kg·m ²	適合油壓缸 Matched cylinders	適合生爪 Matched HC	適合硬爪 Matched HJ
NB-306A5	Ø52	12	5.4	2200	5700	18.4	6000	14	0.06	M1552	HC06	Hj06
NB-208A6	Ø66	16	7.4	3500	8973	20.5	4600	24	0.14	M1868	HC08	HJ08
NB-210A8	Ø78	19	8.8	4300	11000	27.5	4200	37.4	0.4	M1878	HC10	HJ10
NB-212A11	Ø122	23	10.6	5800	15000	20.5	3200	65	0.95	M2511	HC12	HJ12

型式 Model	A	B	C (H6)	D	E	F	G	H	J	K	L	M	N max	O max	O min	p max	p min	Q	R	S	T	U max	V	W	X1 (H12)	X2	X3	X4
NB-306A5	170	91	140	20	15	82.563	116	104.78	14.5	6×M10	52	5	34.3	18.25	9.25	26	14	2	12	20	32	M60×2.0	3×M6	65	16	36	65	M8
NB-208A6	210	103	170	25	17	106.375	150	133.35	19.5	6×M12	66	5	42	23.75	11.75	31.5	15.5	2	14	20	37	M74×2.0	3×M6	80	16	45	80	M8
NB-210A8	254	113	220	30	18	139.719	190	171.45	24	6×M16	78	5	53	33.75	14.25	26.5	7.5	2	16	25	42	M87×2.0	6×M8	94	16	60	102	M10
NB-212A11	315	134	300	30	22	196.869	260	235	28	6×M20	122	6	74.2	36.25	12.75	42	19	2	21	28	52	M135×2.0	3×M10	143	20	60	138	M10

* 保留技術更改的權利，恕不另行通知 Subject to technology changes without prior information
 * 非標需求可訂做 Non-standard requirements can be made